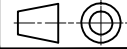


To contact us - Tel +44 (0)1279-729051 email: info@powerproducts.co.uk

**IF IN DOUBT  
ASK**

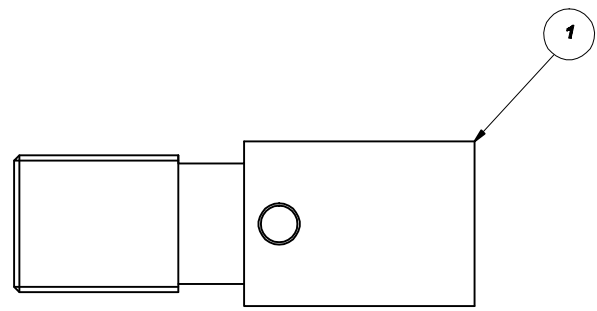
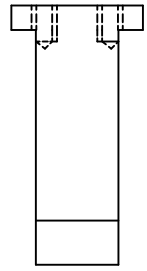
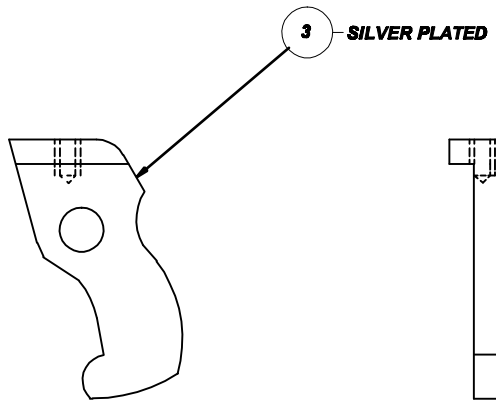
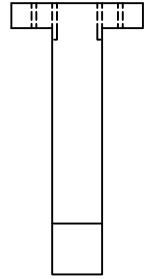
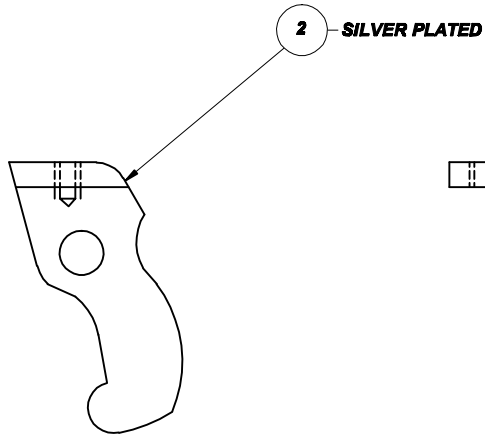
All information contained in this document is confidential and the copyright reserved

Used on dwg MANUAL



**P185901**

Quantity				No	Description	Detail No	OEM Part No
D	C	B	A				
				1	MOVING CONTACT	P185001/1	
				2	NARROW CONTACT FINGER	P185001/2	
				3	WIDE CONTACT FINGER	P185001/3	



**SUB STATION  
SUPPLY  
SOLUTIONS**

**PATTERN MOVING AND FIXED  
NARROW & WIDE FINGERS FOR  
COOKE & FERGUSON OF5 SWGR**

No	Revision notes	Date/Sig	No	Revision notes	Date/Sig	No	Revision notes	Date/Sig	Scale NTS	Drawn ACS	Checked A/JT	Approved A/JT	Date 01/03/10	Sheet No

REV No **P185901** REV **0**